

8 - 12 April 2024

KIT - Campus Alpin,
Garmisch-Partenkirchen

Bridging Spheres
Pop-up Campus



Bridging Spheres – Pop-up Campus is a 5-day Helmholtz top event in science communication that brings together the spheres of science, media, public and policymakers.

As a participant, you will learn how to **build bridges between your own research and the different spheres** and to develop your individual **toolbox**, which will be fed from 3 learning areas:

1. creating a personal scientific statement,
2. contributing as an expert guest in a podcast and
3. authoring a position or advisory paper.

What's in it for you?

- **Understanding the complexity** of bridge building and the needs of the addressed spheres
- **Extending your competencies** in communication, dialogue and knowledge transfer
- **Developing your career** by exploring different career pathways in science communication
- **Networking** with fellow researchers, media professionals, policymakers, potential employers and stakeholders beyond the scientific sphere

Who can apply?

Bridging Spheres is open to 30 participants from the 7 Helmholtz centers in the research field Earth & Environment: **late PhD candidates** (2 years completed), **postdocs**, **science managers** or **senior scientists**.

Program, lecturers and trainers

For updated details on the program, lecturers and trainers see:

www.ce-atmochange.kit.edu/1156.php

What do you need to bring?

You have a high interest in science communication, feel a strong connection to questions related to climate change, have a contract at one of the 7 Helmholtz centers and are comfortable with English as working language.

Application

Online application is **open from December 1, 2023 – January 15, 2024** on [LimeSurvey](https://www.limesurvey.com).

Costs

The Career Center at your Helmholtz Center will inform you on how the costs regarding participation (500,- €), travel and accommodation will be covered.

About

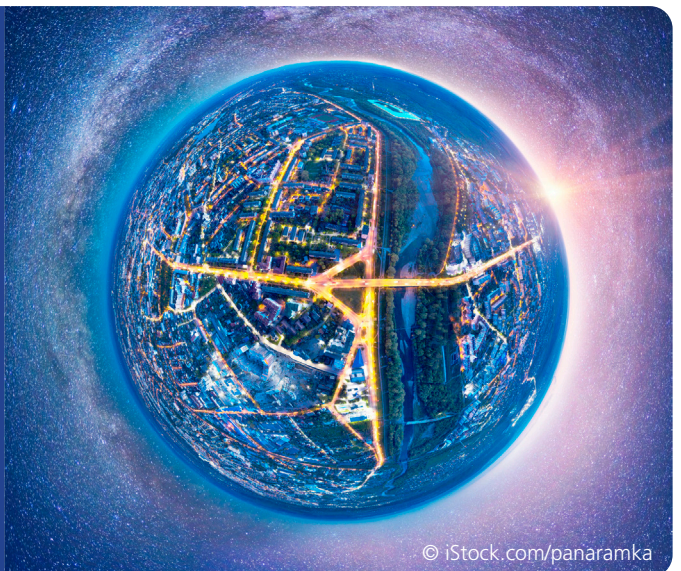
Bridging Spheres is a joint initiative of the 7 centers in the Helmholtz research field Earth & Environment currently working together in the POF IV program "Changing Earth – Sustaining our Future". The initiative is complemented by SynCom, the research field's overarching synthesis and communication platform.

Event dates

- Pop-up Campus:
April 8 (start 18:30) – April 12 (end 13:00), 2024
- Half-day online introductory workshop prior to the event in February or March 2024

Venue

KIT-Campus Alpin, Garmisch-Partenkirchen, Germany, with 1 day at Environmental Research Station Schneefernerhaus on Mt. Zugspitze



© iStock.com/panaramka