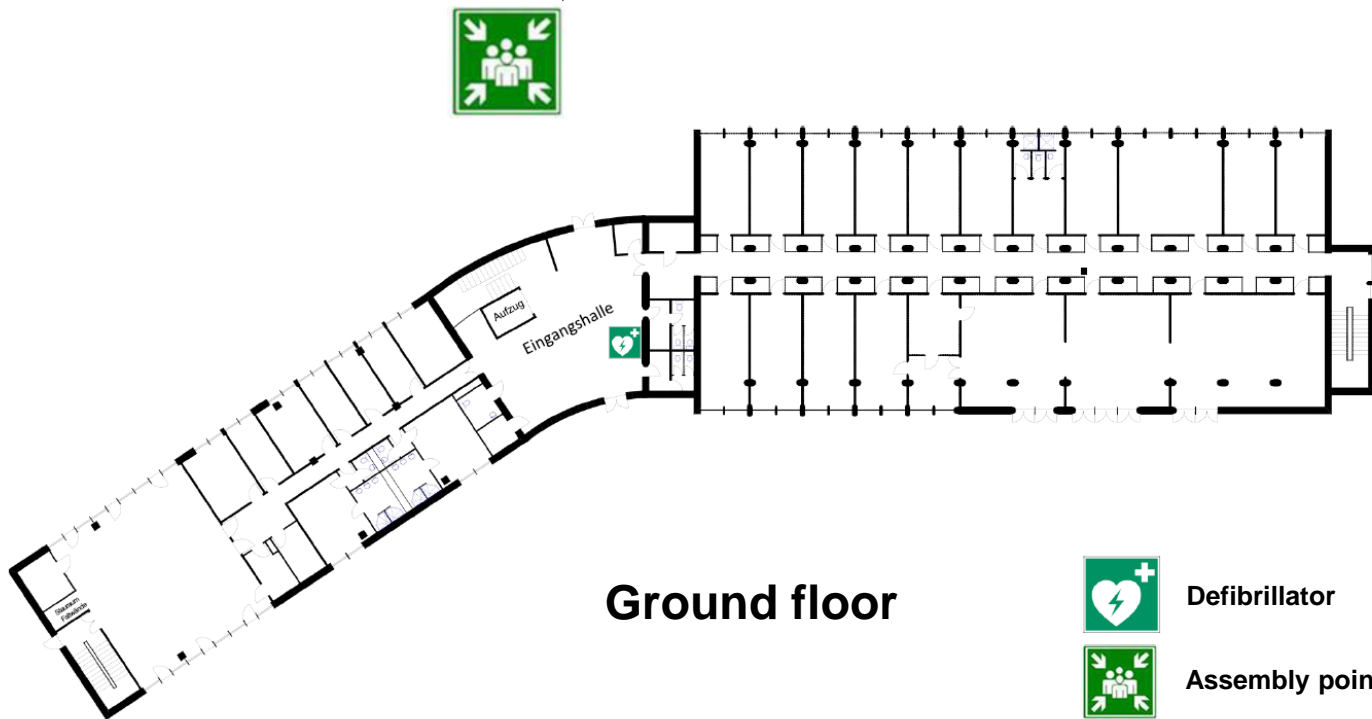


## Location UFZ Magdeburg



## General safety rules

Report accidents and other safety-related incidents to the staff unit Work Safety and Environmental Protection.

**We wish you a pleasant stay at UFZ.**

Helmholtz Centre for Environmental Research GmbH – UFZ

Brückstraße 3a | 39114 Magdeburg

ph +49 391 810-9101

info@ufz.de | www.ufz.de

## Welcome at Helmholtz Centre for Environmental Research (UFZ), location Magdeburg

For your own safety and for your protection against specific hazards at UFZ we have compiled the following information for you.

### Entering UFZ

- Please register by contacting the person to be visited by phone.
- Register brought items before entering the UFZ. This simplifies leaving the UFZ.

### Traffic regulations on UFZ ground

- The road traffic regulations according to Road Traffic Act apply to UFZ ground.



Keep the speed limit of 10 km/h.



Parking is allowed in designated areas in front of the main building. Keep transport and escape routes as well as emergency exits free.

### Alcohol and intoxicants prohibited / No smoking

The use of illegal drugs and alcohol during work is strictly prohibited.



Smoking inside buildings and marked areas is not allowed.

## In this research center you can be exposed to danger in different areas:

- Biological substances, hazardous substances and dangerous equipment are used in laboratories.
- High electrical current and voltage is present in electrical operating areas
- In distinct areas you can be exposed to radiation:
  - ionizing radiation by X-rays or radioactivity,
  - non-ionizing radiation by electric and magnetic fields or UV radiation,
  - laser radiation.
- Radiation protection areas (controlled areas) are access-controlled.



**No unauthorized entry!**  
**Do not enter laboratories or plant areas marked with warning notes unauthorized.**



Do not consume food and drinks inside laboratories and radiation protection areas.



Biohazard



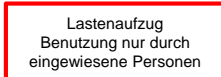
Laser radiation hazard



Ionizing radiation



Magnetic field



Do not use freight elevators without introduction.

## Relevant phone numbers

Gate Leipzig (24 h): 0341 235 – 2202  
Technical problems: 0151-14630613  
Work safety Dep: 0341 235 -1703/ -1559/ -1284  
Emergency: 0-112 or 112

## Conduct during an emergency

- In case of an emergency alert use the escape routes and emergency exits to leave the buildings.
- Do not use elevators.
- Meet at the **assembly point in front of the main entrance**
- Wait and follow the instructions.



## Emergency call 112

- Accident location?
- What kind of injuries?
- What happened?
- Wait for questions.
- How many person injured?
- **Inform the gate**

## Behavior in case of fire

- Emergency call **0-112 or 112**
- Consider conduct during an emergency
- Do not inhale fire gases
- Keep windows closed
- Assist helpless persons
- Try to extinguish small fires
- Self-protection first!



## Accidents and first aid

- Keep calm
- Secure the scene of accident
- Remove person from danger zone
- Emergency call (if necessary)
- Provide first aid
- First-aid material can be found in the respective kits
- In case of electrical accidents or if required: Use a **defibrillator**. The defibrillator is located in **the entrance hall, ground floor**.

