

Atlas of Living Australia (ALA)

The screenshot shows the ALA website interface. At the top, there is a navigation bar with the ALA logo, "Atlas Of Living Australia", and links for "ALA Apps" and "ALA Info". A search bar is present with the text "Search the Atlas" and a "Search" button. Below the navigation bar is a large purple abstract image. A second search bar is overlaid on this image, also with the text "Search the Atlas ..." and a "Search" button. The main content area is titled "Explore the Atlas of Living Australia" and features several interactive cards:

- Australia's species:** Includes an image of a frog and text: "Search for Australian flora and fauna species by common, scientific name or search by category." with a "Browse species" button.
- Species by location:** Includes an image of a diver and text: "Search by pre-defined region, or enter an address or location to find the recorded species nearby." with a "Browse locations" button.
- Collections:** Includes an image of museum specimens and text: "Learn about the institution, the collections they hold and view records of specimens that have been databased." with a "Browse collections" button.
- Sharing biodiversity knowledge:** Text: "Contributed by Australia's academic, scientific, environmental communities and you." with a "Get involved" button.
- Mapping & analysis:** Includes an image of plant roots.
- Data sets:** Includes an image of a bird colony.
- ALA Community:** Includes an image of a starry night sky.
- Blog & News Updates:** Includes a "View all" link and a list of updates: "NSW South Coast: December 2015 BioBlitz" and "PhyloLink to be launched".

Atlas of Living Australia (ALA)

- Australian Government unter NCRIS (National Research Infrastructure for Australia)
- klein angefangen, aber 2009 wurden 30 Millionen australische Dollar von der Regierung bereit gestellt
- Atlas arbeitet mit GBIF (Global Biodiversity Information Facility) zusammen
- Webseite ist lizenziert unter der Creative Commons Attribution 3.0 Australia License
- für die Datenprovider gelten aber auch die eigenen Nutzungsbedingungen, wenn diese sich von den Nutzungsbedingungen des Atlas unterscheiden

Atlas of Living Australia (ALA)

- aktuell 141 Citizen-Science-Projekte gelistet
- davon sind 99 Projekte aktiv
- 42 Citizen-Science-Projekte abgeschlossen
- neue Projekte können mit Hilfe des ALA initiiert werden
- durchführen von BioBlitz Projekten
 - Bio = Leben
 - Blitz = mache es schnell und intensiv
 - BioBlitz = finde und sammle innerhalb kürzester Zeit so viele Lebewesen wie möglich

Atlas of Living Australia (ALA)

- z.Zt. über 60,1 Millionen Einträge
- über 12000 aktive User seit 2010
- Abfrage von 113 Internetseiten
- Dashboard mit relevanten statistischen Daten zur Nutzung der Plattform [1]
- Web service API mit JavaScript Object Notation (JSON) und Extensible Markup Language (XML) Schnittstellen [2]
- Mobile Version of Atlas [3]
- erweiterte Suche nach Einträgen [4]

Dashboard [1]

Occurrence records

60,122,652

records in total.

We estimate the number of potential duplicate records to be **6,892,735**.

2867 Data sets

Harvested websites	113
Occurrence record sets	2,359
Document sets	10
Uploaded record sets	19

Most recently added dataset is:

"Restoring Murray River Riparian Landscapes"

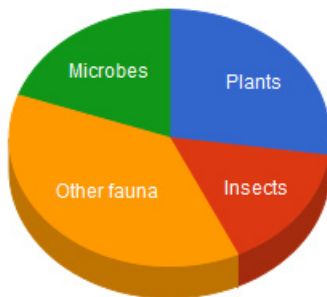
Basis of records

Human observation	44.06M
Preserved specimen	11.57M
Machine observation	454,877
Genomic DNA	154,529
Material sample	134,417

[More](#)

147 Collections

Click on a Collection for details:



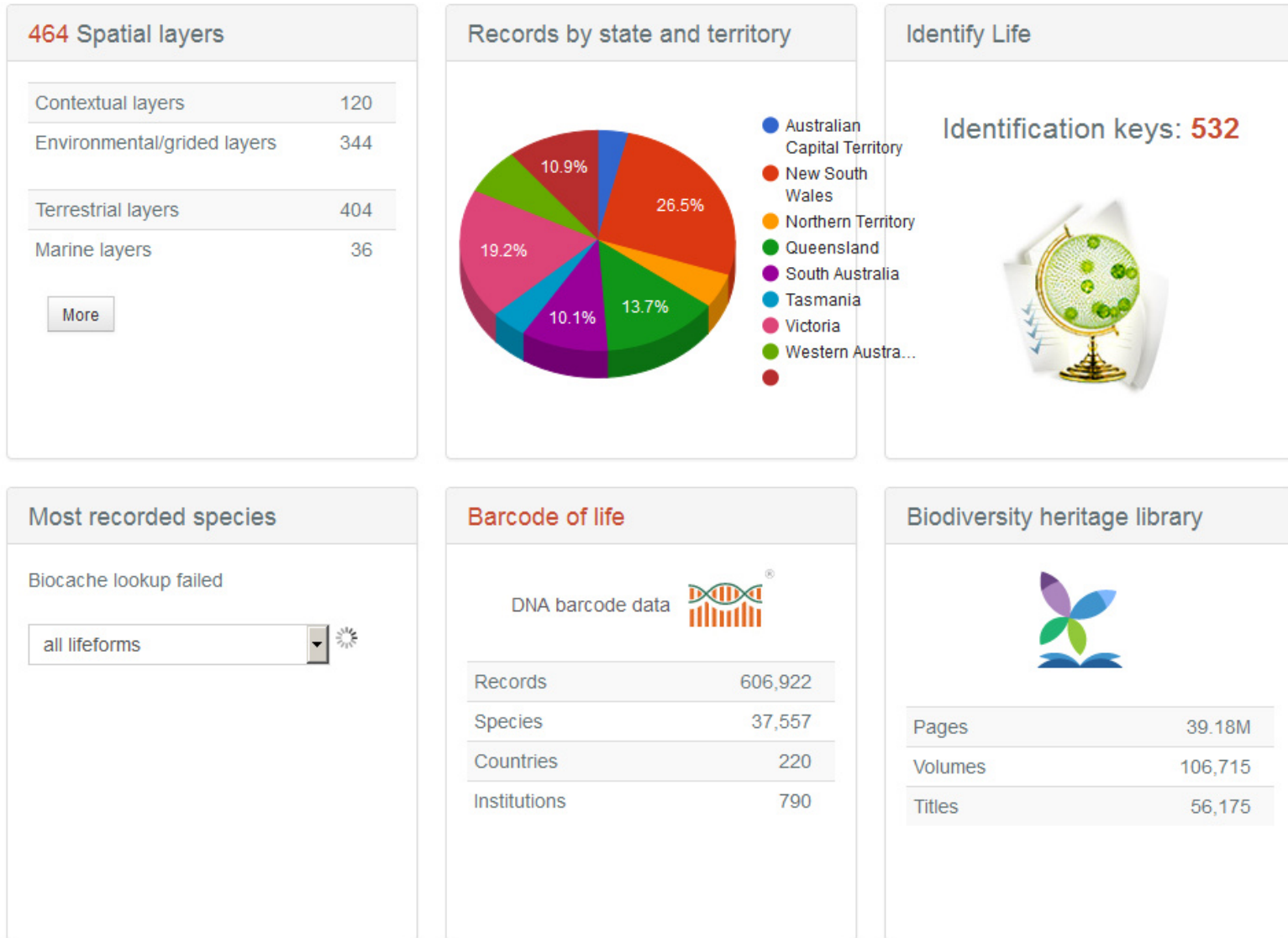
Records by date

Latest record	7 March 2016
Last image added	14 July 2008
1600s	49
1700s	17,717
1800s	378,028
1900s	27.18M
2000s	27.74M

National Species Lists

Accepted names	195,424
Synonyms	146,974
Species names	152,080
Species with records	111,566

Dashboard [1]



Web service API [2]

Web service API

The (nearly) complete listing of the web services for the ALA. Send complements/issues to support@ala.org.au.

The webservices are listed by category. To list by application, [click here](#).

[+ Expand All](#) [- Collapse All](#)

Species profile - Taxonomic name, concept lookups, autocomplete services

Species lookup with GUID - <http://bie.ala.org.au/ws/species/{guid}.json>

[GET](#) [JSON](#) [JSONP](#)

Species search - <http://bie.ala.org.au/ws/search.json?q={q}&fq={fq}>

[GET](#) [JSON](#)

Species indexed fields - <http://bie.ala.org.au/ws/admin/indexFields>

[GET](#) [JSON](#)

Bulk species lookup - <http://bie.ala.org.au/ws/species/bulklookup.json>

[POST](#) [JSON](#) [DEPRECATED](#)

Bulk species lookup - revised JSON input - <http://bie.ala.org.au/ws/species/lookup/bulk>

[POST](#) [JSON](#)

Species download - <http://bie.ala.org.au/ws/download?q={q}&fq={fq}>

[GET](#) [CSV](#)

Bulk species lookup (GET) - <http://bie.ala.org.au/ws/guid/batch.json?q={q}>

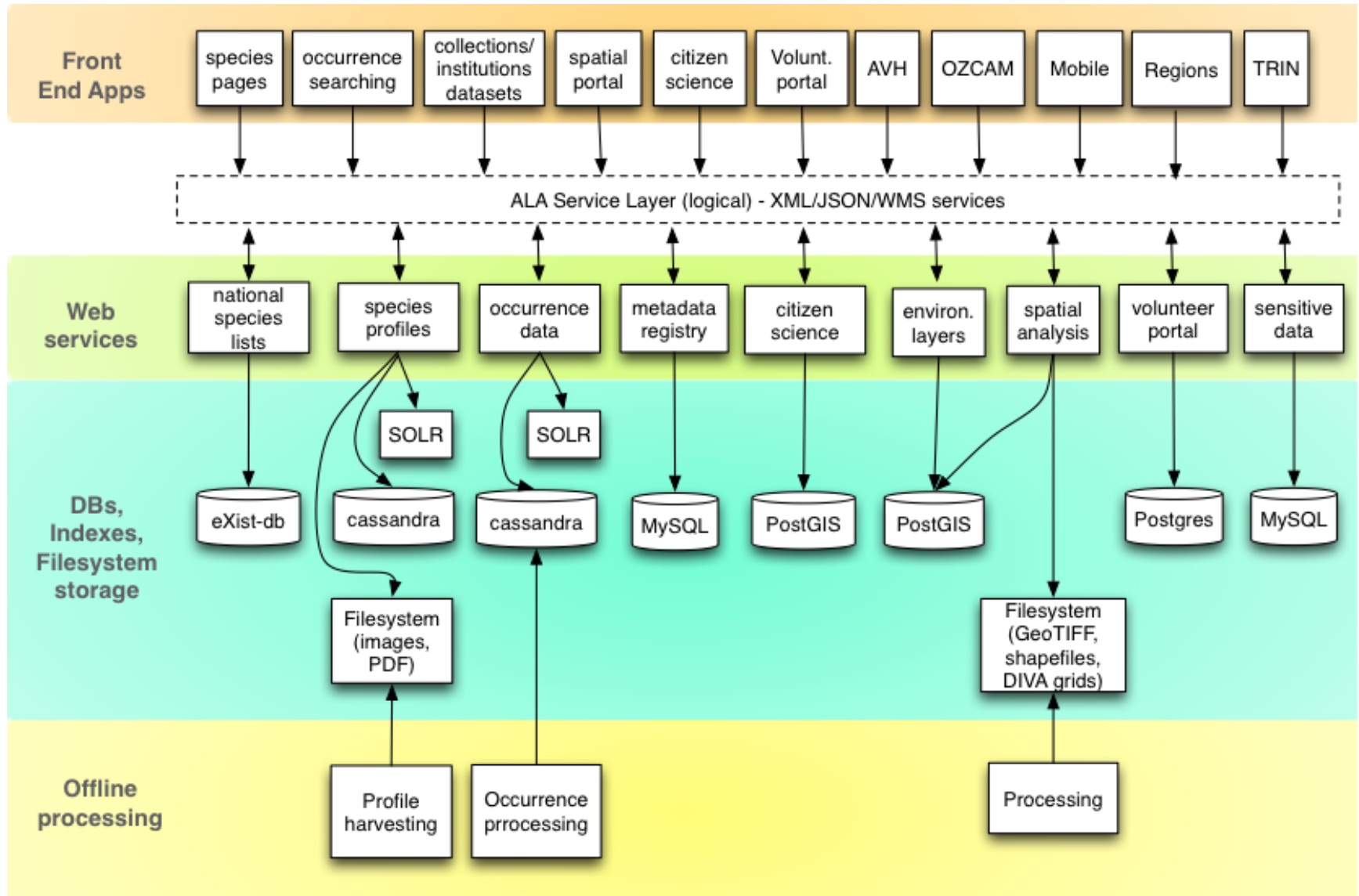
[GET](#) [JSON](#)

Get higher classifications for GUID - <http://bie.ala.org.au/ws/classification/{guid}>

[GET](#) [JSON](#)

Occurrence - Specimen & observation data searching

ALA IT Infrastructure [2]



Mobile Version (Android und iOS) [3]

OzAtlas
Atlas of Living Australia [Lernen](#) ★★★★★ 22
Nicht bewertet

[+ Zur Wunschliste hinzufügen](#) [Installieren](#)

Species search
kangaroo
Lumholtz's Tree-kangaroo
Dendrolagus lumholtzi
Eastern Grey Kangaroo
Macropus giganteus
Mangles Kangaroo Paw
Anigozanthos manglesii
Buddia
Eremophila duttonii
Emu Apple
Owenia acidula
Short-beaked Echidna
Tachyglossus aculeatus

OzAtlas - Atlas of Living Australia
Record a sighting
Species search
Explore Your Area
About the Atlas

Explore Your Area
10km
VIEW SPECIES FOR AREA

Beschreibung mit Google Übersetzer in Deutsch übersetzen?

The Atlas of Living Australia (Atlas) is a national initiative to bring together rich information about

Suchfunktion [4]

[Advanced search](#)

Occurrence records

abies alba

27 results for **text:abies alba**

per page: sort: order:

Family: Pinaceae Country: New Zealand
Institution: Scion Collection: National Forestry Herbarium Basis Of Record: Preserved Specimen Catalog Number: NZFRI:NZFRI 8454 [View record](#)

Family: Pinaceae
Institution: Scion Collection: National Forestry Herbarium Basis Of Record: Preserved Specimen Catalog Number: NZFRI:NZFRI 6507 [View record](#)

Family: Pinaceae Date: 1998-11-21 Country: New Zealand
Institution: Landcare Research NZ Ltd Collection: Allan Herbarium Basis Of Record: Preserved Specimen Catalog Number: CHR:CHR 532530 A [View record](#)

Family: Pinaceae Date: 1998-11-21 Country: New Zealand
Institution: Landcare Research NZ Ltd Collection: Allan Herbarium Basis Of Record: Preserved Specimen Catalog Number: CHR:CHR 532530 B [View record](#)

Family: Pinaceae Country: New Zealand
Institution: Auckland War Memorial Museum Collection: Auckland War Memorial Museum Herbarium Basis Of Record: Preserved Specimen Catalog Number: AK:AK103560 [View record](#)

Family: Pinaceae Date: 1989-02-26 Country: Ireland
Institution: Landcare Research NZ Ltd Collection: Allan Herbarium Basis Of Record: Preserved Specimen Catalog Number: CHR:CHR 464298 [View record](#)

Family: Pinaceae Country: New Zealand
Institution: Auckland War Memorial Museum Collection: Auckland War Memorial Museum Herbarium Basis Of Record: Preserved Specimen Catalog Number: AK:AK162980 [View record](#)

Family: Pinaceae Country: New Zealand
Institution: Auckland War Memorial Museum Collection: Auckland War Memorial Museum Herbarium Basis Of Record: Preserved Specimen Catalog Number: AK:AK154298 [View record](#)

Family: Pinaceae Country: New Zealand
Institution: Scion Collection: National Forestry Herbarium Basis Of Record: Preserved Specimen Catalog Number: NZFRI:NZFRI 6867 [View record](#)

Family: Pinaceae Country: New Zealand

Suchfunktion [4] mit Karte

Occurrence records Advanced search

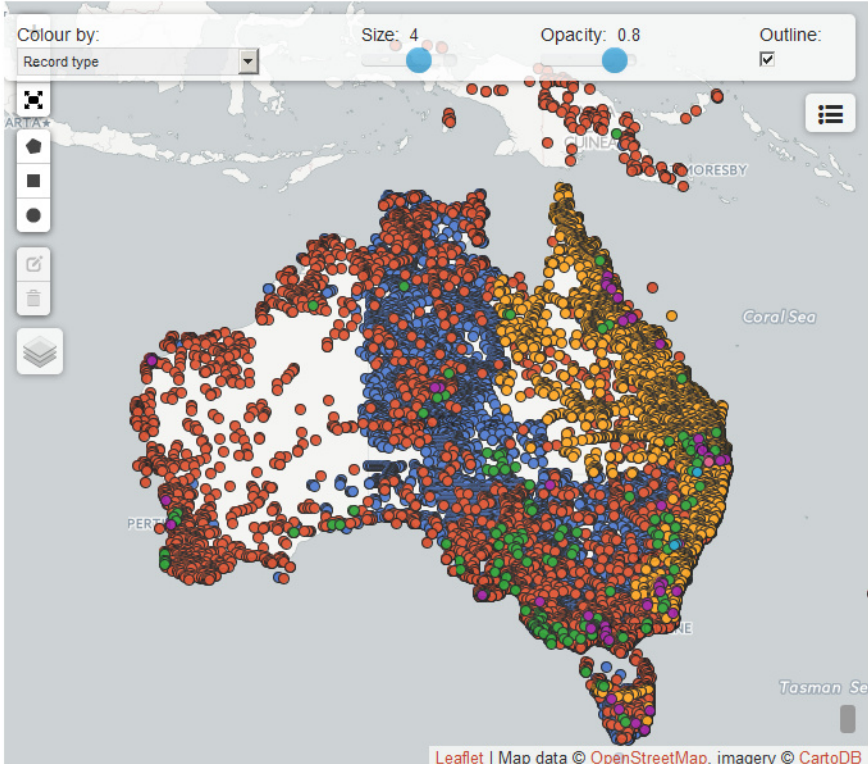
Macropodidae Quick search

Customise filters 416.543 results for FAMILY: MACROPODIDAE

Records Map Charts Record images

View in spatial portal Download map

Colour by: Record type Size: 4 Opacity: 0.8 Outline:



Map showing occurrence records for Macropodidae in Australia. The map displays numerous colored dots representing records, primarily concentrated in the eastern and southern coastal regions. The map includes labels for 'PERTH', 'GUINEA', 'MORESBY', 'Coral Sea', and 'Tasman Sea'. The map is powered by Leaflet, with data from OpenStreetMap and imagery from CartoDB.

Narrow your results

- ▶ Taxon
- ▶ Identification
- ▶ Location
- ▶ Occurrence
- ▶ Record
- ▶ Assertions
- ▼ Attribution
 - User
 - Danny Dasyurus (161)
 - Arthur Chapman (78)
 - Janine Duffy (21)
 - Gerry Maynes (14)
 - [choose more...](#)
 - Collection
 - Australian National Wildlife Collection (11.158)
 - Australian Museum Mammalogy Collection (6.021)
 - Western Australian Museum
 - [choose more...](#)
 - Institution
 - Commonwealth Scientific and Industrial Research Organisation (11.158)
 - Australian Museum (6.109)
 - Museum Victoria (3.892)
 - [choose more...](#)
 - Data provider

Atlas of Living Australia (ALA)

- stellt eine Vielzahl von Funktionen bereit
- einzelne Funktionalitäten können in andere Portale integriert werden
- Projekte können innerhalb der ALA Infrastruktur ihre eigene Projektseite bilden (inkl. sandbox)
- ALA IT Infrastruktur kann auch in anderen Ländern aufgesetzt werden (Spanien, Portugal, Argentinien, Frankreich, Belgien, Schottland)
- alles OpenSource
- bietet ein data quality framework zur Validierung der Daten
- <http://www.ala.org.au>
- <http://spatial.ala.org.au>

Zusammenfassung

Der Atlas of living Australia ist eine Schnittstelle zur Erfassung von Biodiversität in Australien. Er ist ein Einstiegsportal und stellt eine Vielzahl von Werkzeugen zur Verfügung, ohne in die eigentliche Arbeit der Verbände/Projekte einzugreifen. Dadurch bleibt die Souveränität der Projekte erhalten. Bei Bedarf können Teile seiner Infrastruktur für andere Portale verwendet werden. Er kann auch als völlig eigenständiges System auf anderen Servern aufgesetzt werden.

Der ALA ist ein Dienstleistungsportal.