

## E-learning Module on Integrated Water Resources Management (IWRM)

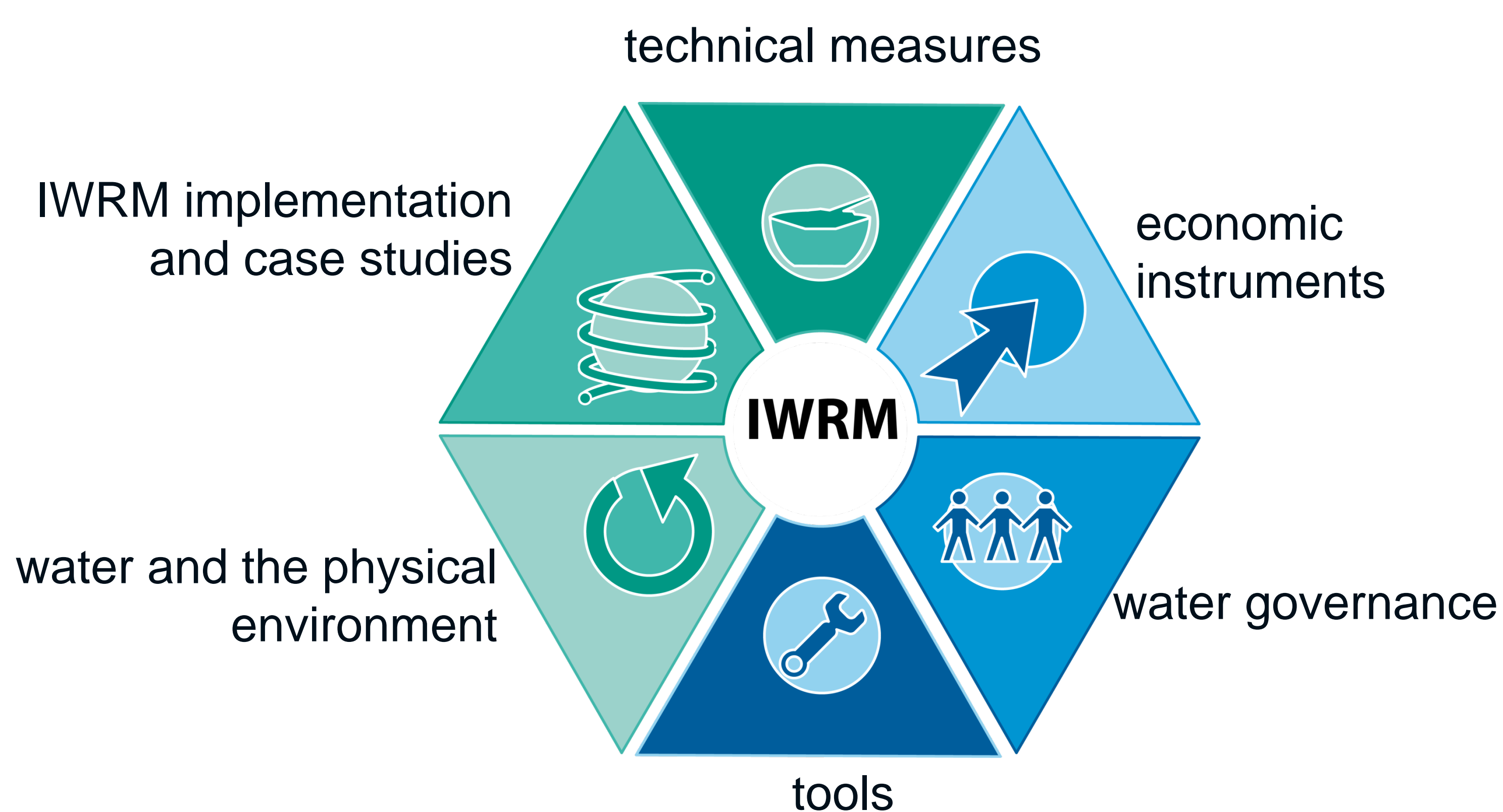
Steffen Niemann<sup>1</sup>, Marco Leidel<sup>2</sup>, A.H. Saliha<sup>3</sup>, J. Cullmann<sup>3</sup>, Jörg Seegert<sup>2</sup>, Darja Markova<sup>1</sup>,  
Dietrich Borchardt<sup>1</sup>, Peter Krebs<sup>2</sup>

<sup>1</sup>Helmholtz Centre for Environmental Research – UFZ, <sup>2</sup>Technische Universität Dresden, <sup>3</sup>IHP/HWRP Secretariat, Federal Institute of Hydrology

### Concept of the E-Learning Module on IWRM

One possibility to support the worldwide implementation of IWRM is to improve respective education. This is why IWAS (International Water Research Alliance Saxony) and the German IHP/HWRP (International Hydrological Programme of UNESCO and Hydrology and Water Resources Programme of WMO) developed an E-learning module on IWRM that is supposed to complement classical learning options for instance at universities as well as to be used for vocational training.

According to the state of the art in IWRM, 39 most relevant topics have been chosen to fit in a comprehensive representation of current water issues. Respective academics from various universities and research institutions, as well as practitioners have been selected in order to videotape their lecture.



To facilitate access to the module, an introduction to IWRM and a user guide showing the functionalities of the E-Learning module are provided. It is possible to access and navigate through the electronically available lectures (E-lectures) via keywords, text search function and categories. Those categories assure a plausible and intuitive access to the field of IWRM.

Furthermore, all lectures within a category are sorted in a didactical order, meaning that basic lectures are at the beginning and becoming gradually more advanced.

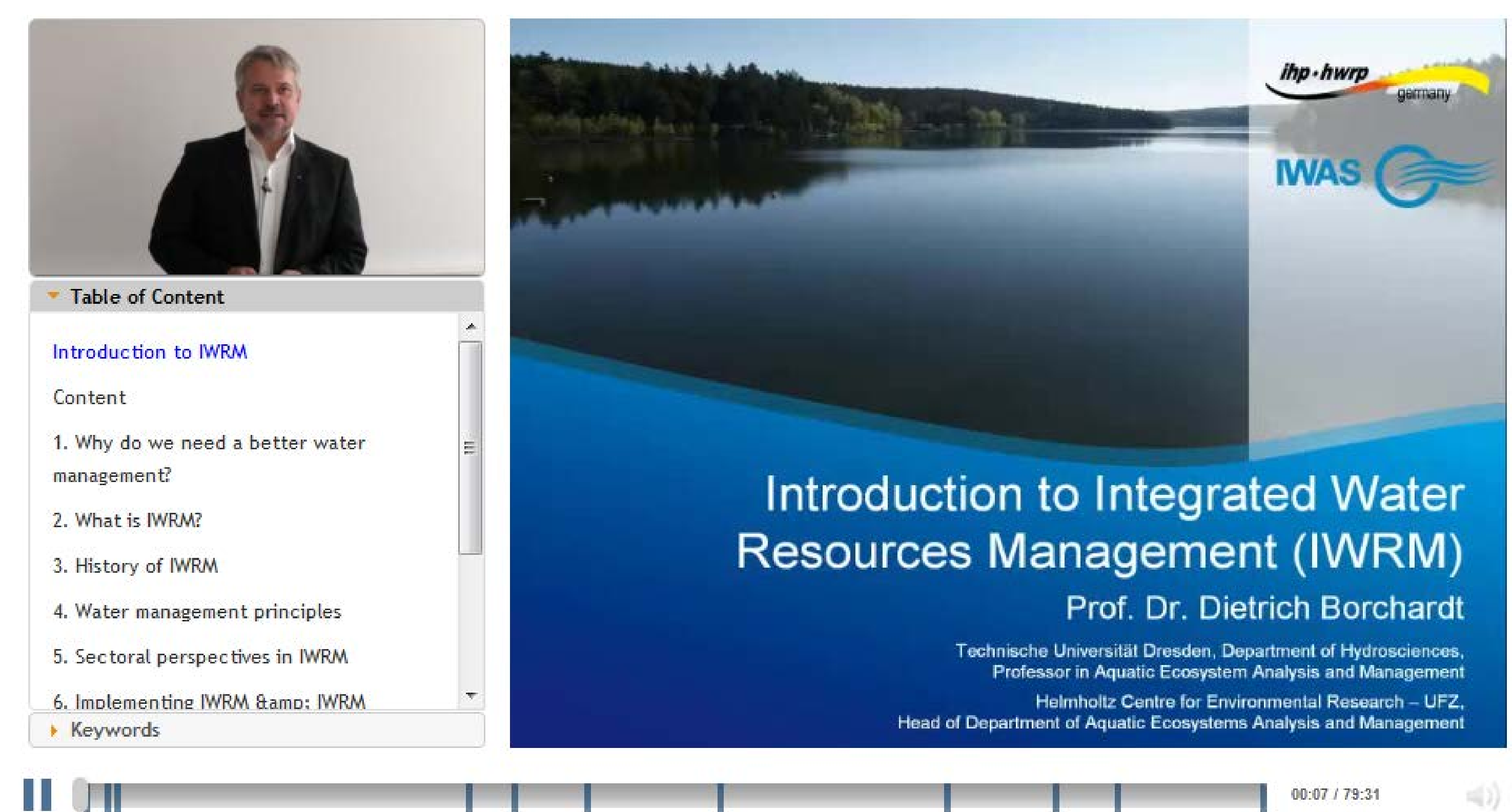
Since IWRM is complex and as interdisciplinarity is often missing in water management, the module interlinks lectures, i.e. thematic correlations are illustrated (e.g. climate change) and appear as linkages (hyperlinks) between the lectures, allowing the user to switch from one lecture to another one.

Those linkages are helpful, since none of the lecturers can cover all issues in IWRM- there will be always interfaces to other topics- and those interfaces need to be identified and made available.

Therefore, the additional value of this E-Learning concept is that the complexity of Integrated Water Resources Management can be conveyed to persons interested in this topic.

### Introduction to Integrated Water Resources Management (IWRM)

Prof. Dr. D. Borchardt



Target groups of the E-learning module are graduating students in water-related fields, decision makers, water experts and administrative staff primarily in developing and transition countries. The module is available in the world wide web as well as on USB flash drives.

### Acknowledgement

Software development, hypervideo architecture was done by Niels Seidel. International Graduate School (IHI) Zittau

Production and graphic design of the E-learning module was done by Andrea Wessler, IHP/HWRP Secretariat, Federal Institute of Hydrology, Germany.

[www.iwrn-education.org](http://www.iwrn-education.org)

### Contact and further information:

Dr. Steffen Niemann (UFZ) Tel.: +49 391 810 9653

E-Mail: [steffen.niemann@ufz.de](mailto:steffen.niemann@ufz.de)

Marco Leidel (TUD) Tel.: +49 351 463 31282

E-Mail: [marco.leidel@tu-dresden.de](mailto:marco.leidel@tu-dresden.de)