

IWAS  
Brazil  
ÁGUA-DF



# IWAS/ÁGUA-DF – an IWRM approach for Central Brazil



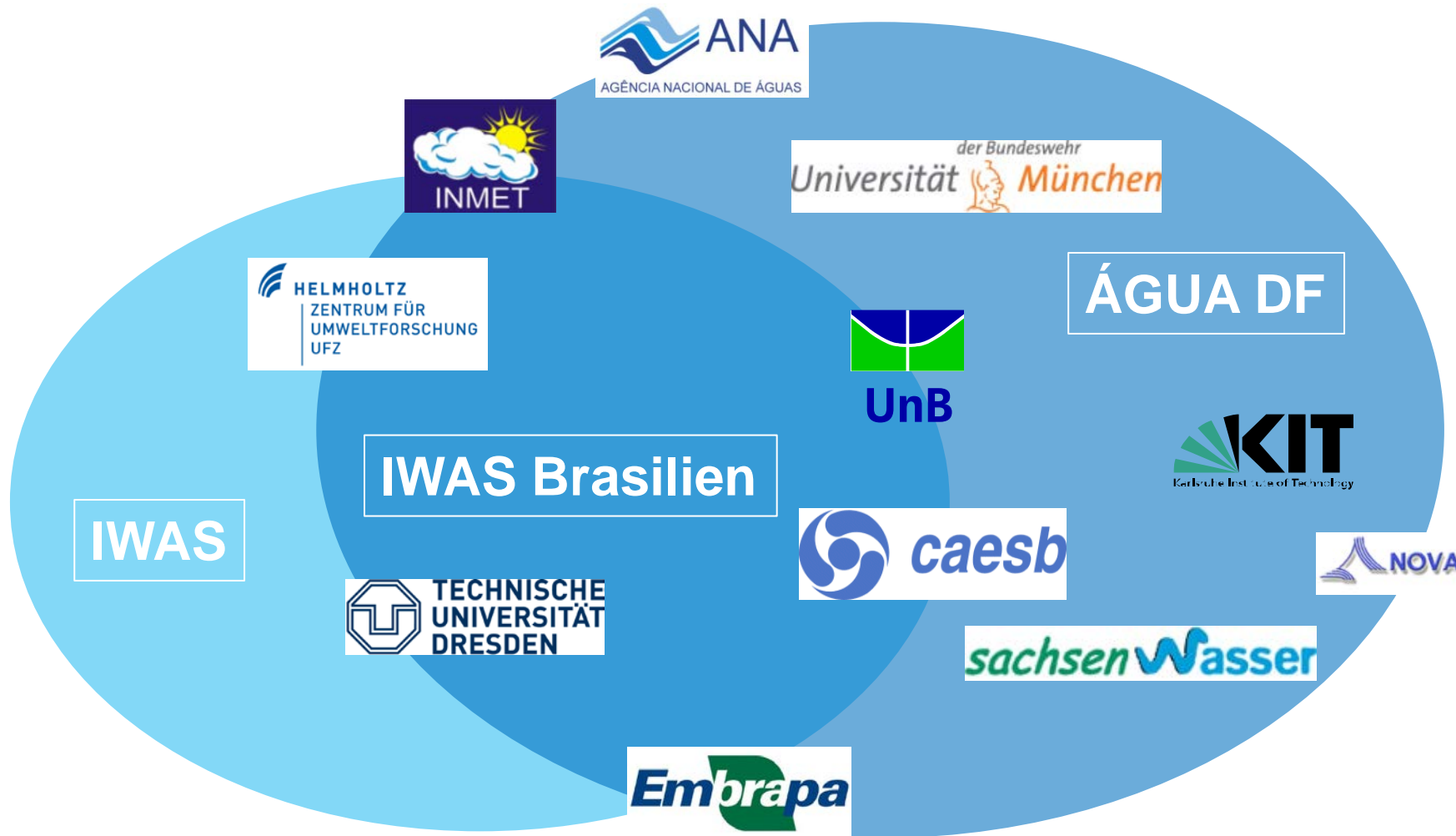
Funded by



Bundesministerium  
für Bildung  
und Forschung



Patrocinado  
por



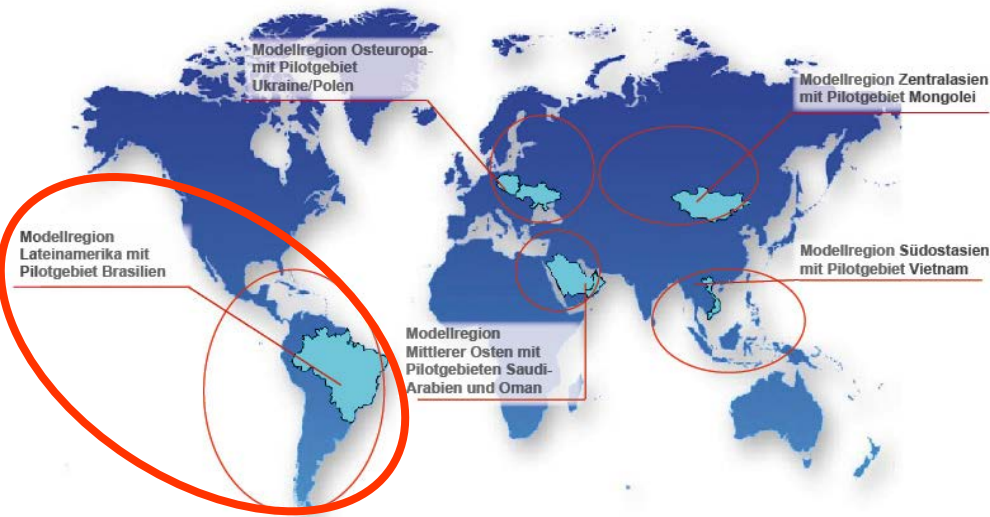
# Consortium IWAS/AGUA-DF



# IWAS objective:

**Sustainable management of water resources in hydrologically sensitive regions threatened by increasing human activity and climate change**

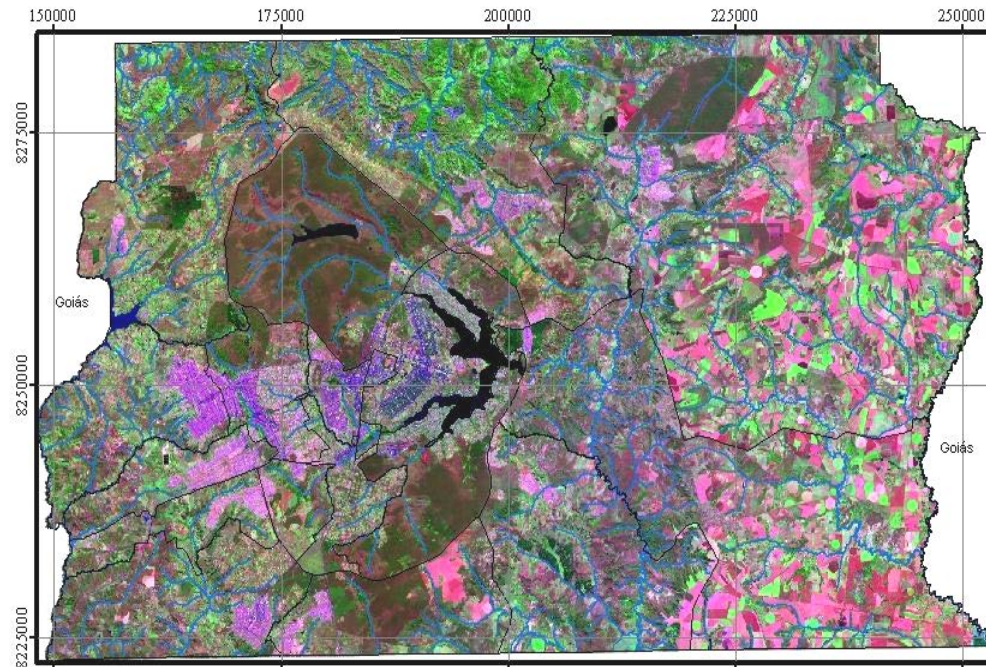
## Regional Project Latin America: Brasília/DF



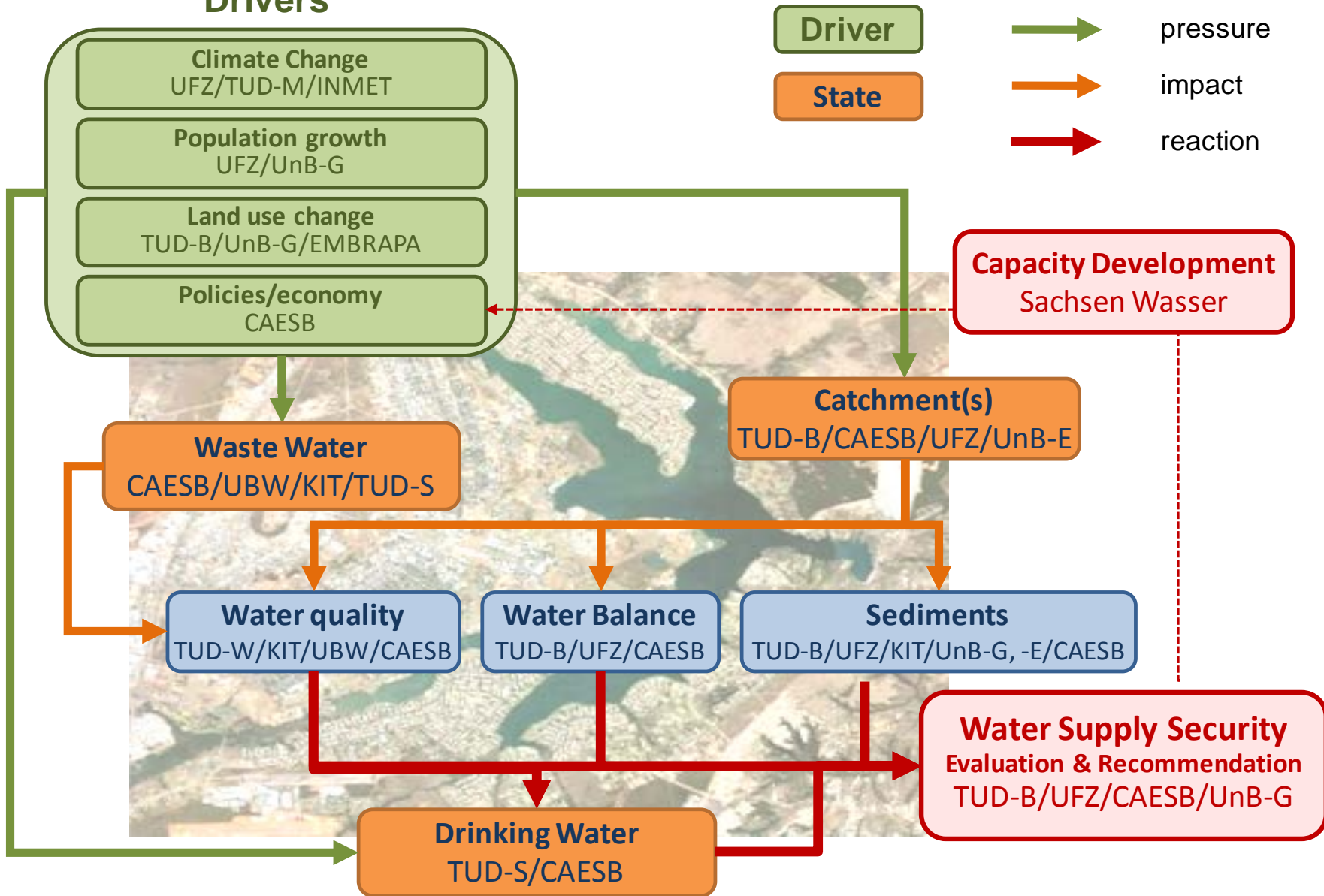
# Focus region: Metropolitan area of *Brasília*

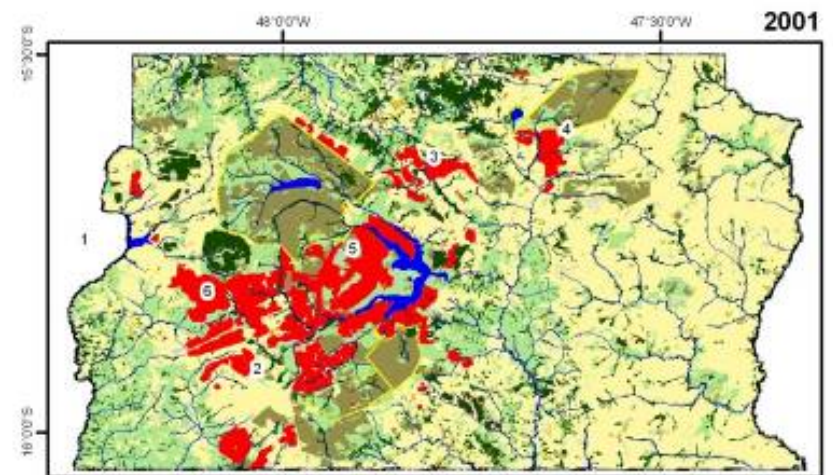
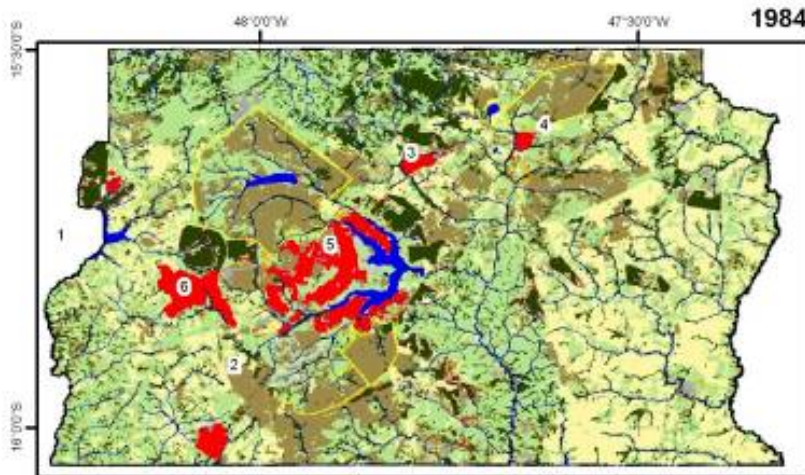
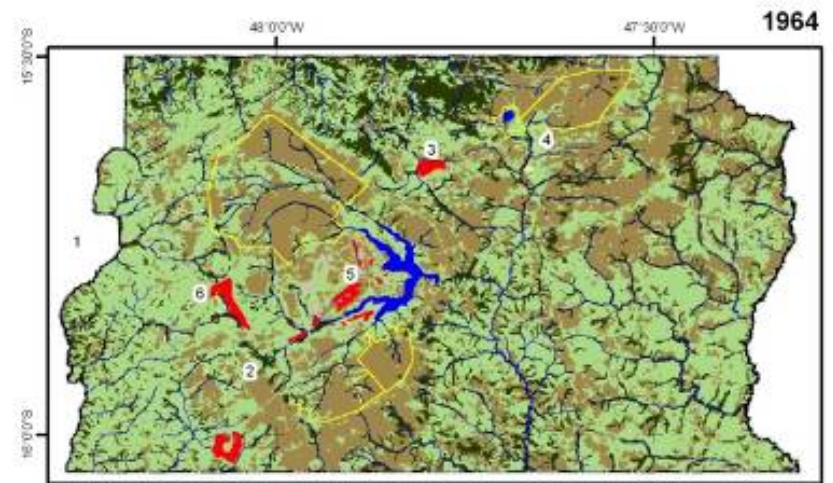
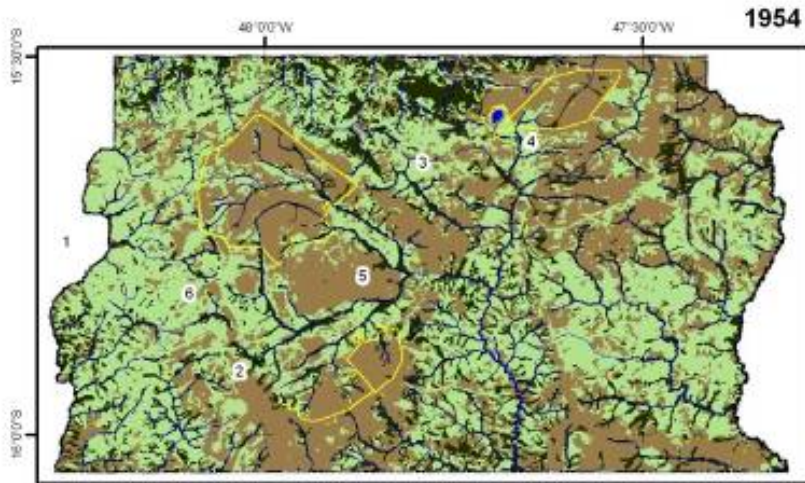
## Objectives

- **System analysis:** available water resources, patterns of water use, infrastructures, risk potential
- **Prognoses** of the development of the water supply situation (influences: decrease in precipitation, population growth, urbanization, intense agricultural activity)
- Introducing **innovative technologies** (waste and drinking water treatments)
- Development of new use **concepts and management strategies** in cooperation with local decision makers and water supplier



# Drivers





DF - Distrito Federal, RJ - Rio de Janeiro City

**Legend - Land Use**

- Urban area
- Agricultural area
- Bare soil

- Grass land
- Cerrado (savana)
- Forest
- Lakes, reservoirs and rivers

**Urban area growth**

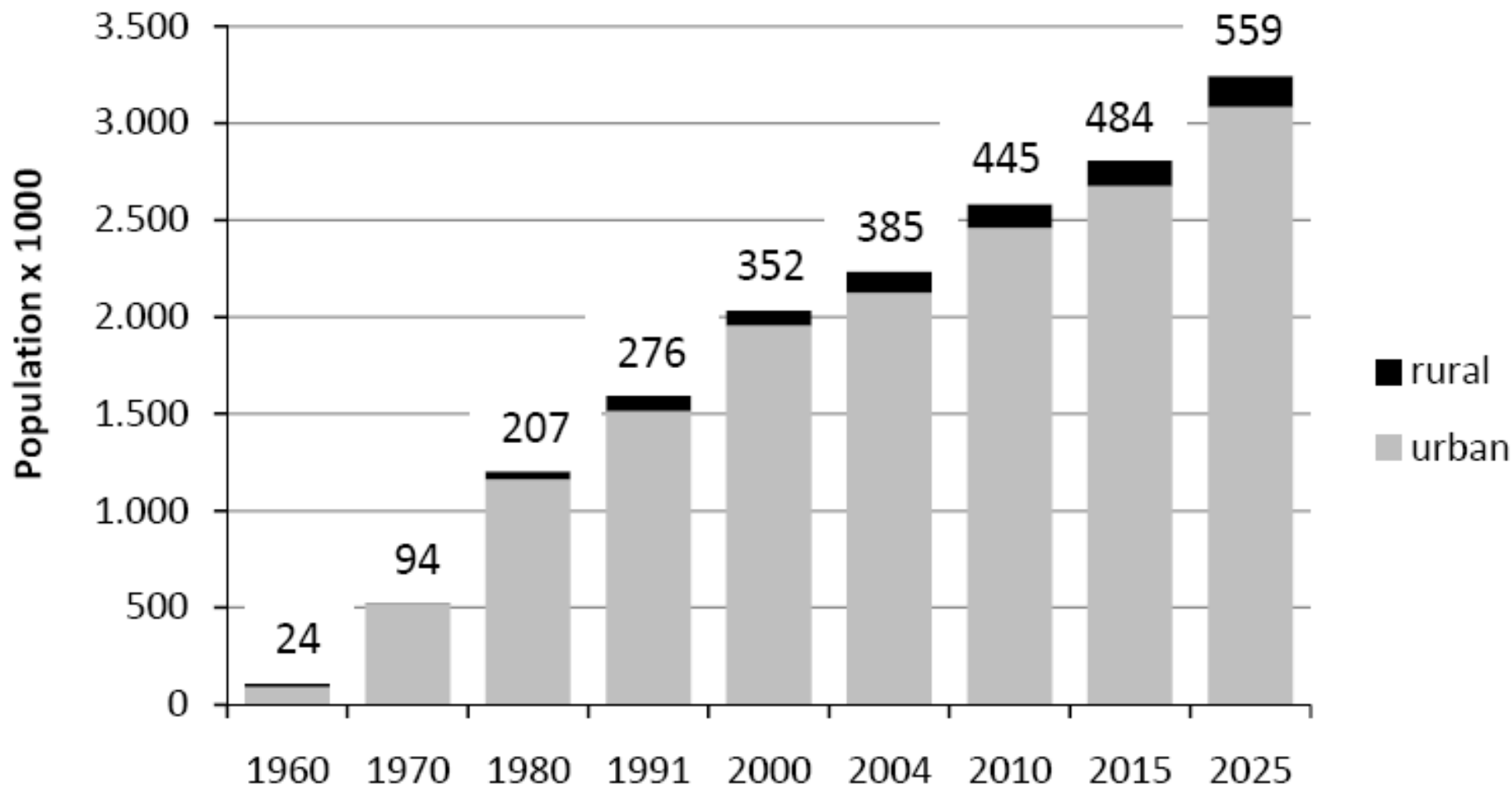
- 1 - Aguas Lindas de Goiás
- 2 - Riacho Fundo
- 3 - Sobradinho
- 4 - Planaltina
- 5 - Brasília
- 6 - Ceilândia

Distrito Federal - DF





**Urban sprawl**  
(satellite city Samambaia)



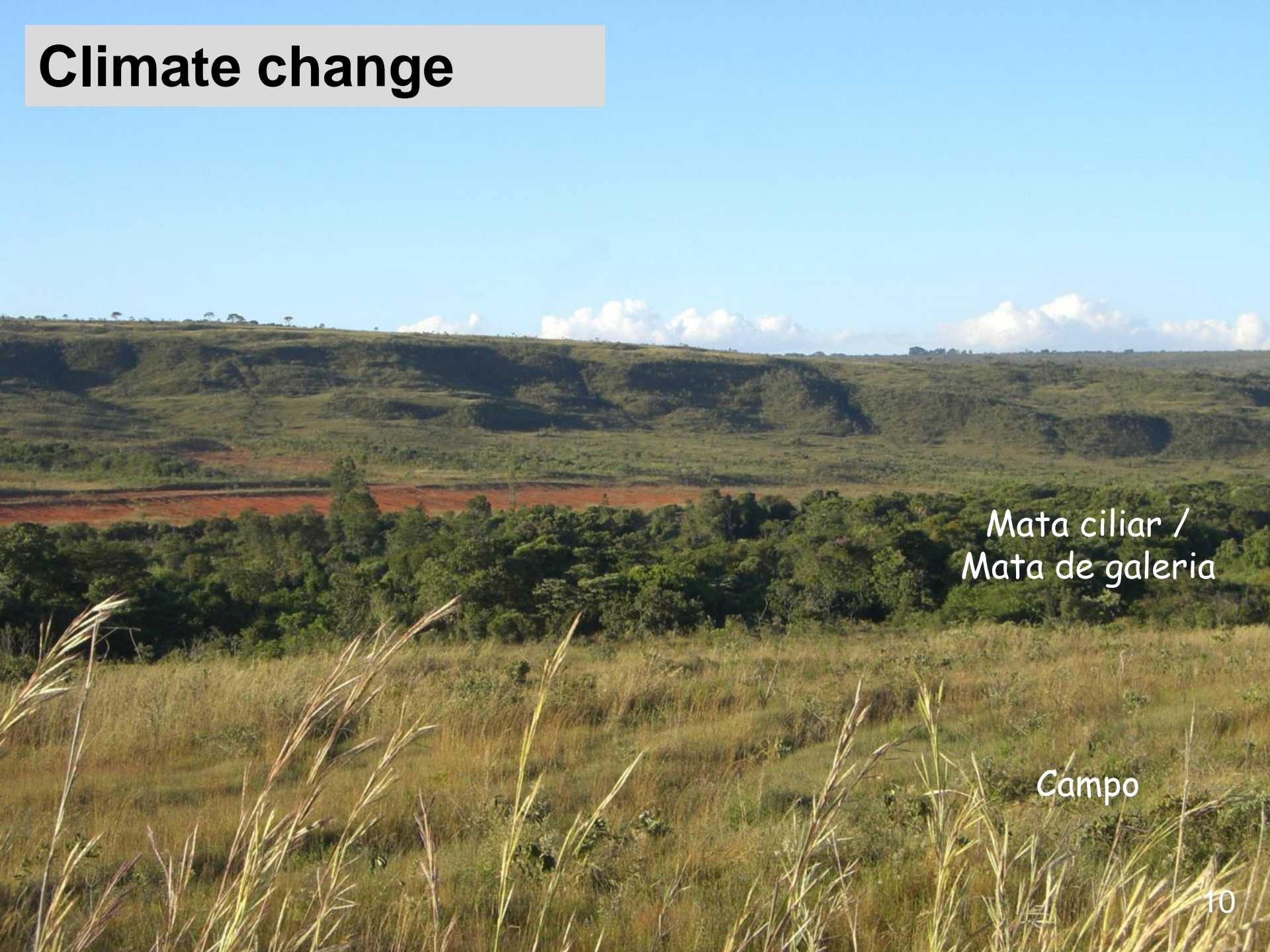
*Historic and predicted population of the DF from 1960 to 2025; numbers above columns are population density (inhabitants per km<sup>2</sup>) (PGIRH 2006)*



# Agriculture and landuse change



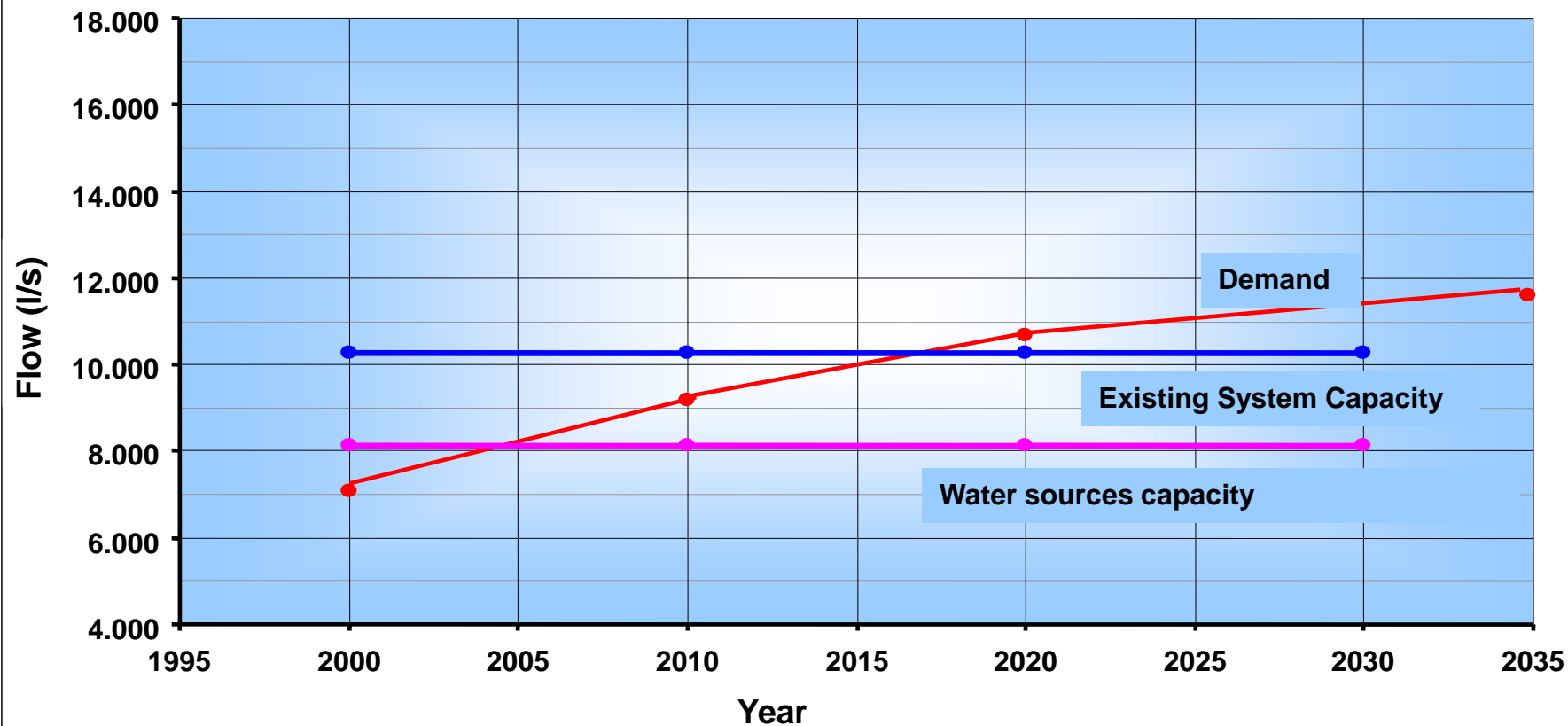
# Climate change



Mata ciliar /  
Mata de galeria

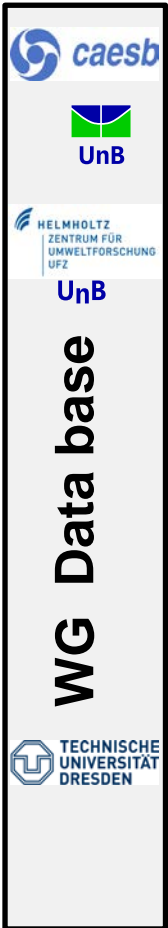
Campo

## Demand x Capacity Balance



K. Neder










**Catchments**      



WG Climate (Change)    WG Land Use    WG Water Cycle

**Reservoirs**     

WG Sediments    WG Water Quality

**Water Treatment**     

WG Drinking Water    WG Urban Drainage and Waste Water

**Water Distribution**  

WG Drinking Water Distribution    WG Utility Management

**WG Decision Support System – IWRM**

**WG Capacity Building – Training of the trainers and technicians**

Gente  
de mais.  
Água  
de menos.



E o que você  
faz para proteger  
a nossa água?  
Nada?

Cada vez mais, o número de pessoas nas cidades aumenta e a quantidade de água só faz diminuir.  
A Adasa trabalha, dia a dia, na regulação, controle e fiscalização dos recursos hídricos do Distrito Federal.

Faça também a sua parte: não polua e não desperdice.

**ÁGUA. USO CONSCIENTE,  
BENEFÍCIO PERMANENTE.**

